



# BELFAST HILLS PARTNERSHIP

## MARVELLOUS MINIBEASTS

### RESOURCE PACK

#### (PRIMARY)

This pack is designed to introduce pupils to minibeasts, the importance of insects' roles in our world, including pollination, and how we can help them. The following worksheets are designed to accompany our Marvellous Minibeasts video, which can be found on our YouTube channel (<https://youtu.be/j-dd9wAixQE>)

We hope that the video and these activities will get pupils thinking about how important insects are to us and our ecosystems and how our positive actions can have a beneficial effect on the local environment and wildlife. These resources directly link to the NI Primary Curriculum for Key Stages 1&2 through the World Around Us, helping children develop an awareness of themselves, their place in the world and the environment. The theme of this pack explores the interdependence between plants, animals and ourselves, as well as how animals adapt and survive within in varying environments. It also highlights how people can effect positive change on their environment and benefit local wildlife.



# MINIBEAST WORD SEARCH

## Minibeast Detectives

A	Y	N	I	N	S	E	C	T	G	S	L
R	D	A	F	P	O	L	L	E	N	O	C
J	C	A	R	N	I	V	O	R	E	I	P
U	H	S	J	W	I	N	G	S	H	L	R
M	A	N	T	E	N	N	A	E	D	F	L
D	I	R	S	E	G	M	E	N	T	D	Z
P	N	H	A	B	I	T	A	T	K	B	W
I	H	E	R	B	I	V	O	R	E	X	Y

Can you find all the **minibeast** words below in the word search? Colour in each one you can find! You could decorate your page with drawings of some of your favourite insects.

Find the following words in the puzzle.  
Words are hidden → and ↓ .

HERBIVORE  
CARNIVORE  
ANTENNAE  
HABITAT

SEGMENT  
INSECT  
POLLEN  
WINGS

CHAIN  
SOIL



## BUGS: TRUE OR FALSE?

Can you figure out if these **minibeast** facts are **true** or **false**? Circle your answer. Don't worry if you're not sure - you'll be able to learn a new fun fact about bugs!

1. Woodlice have 14 legs

TRUE

FALSE

2. Woodlice are related to crabs & lobsters and breathe using gills

TRUE

FALSE

3. You can tell how old a ladybird is by how many spots it has

TRUE

FALSE

4. Spiders are classed as insects

TRUE

FALSE

5. Centipedes can eat other centipedes

TRUE

FALSE

6. Millipedes are carnivores

TRUE

FALSE

7. There are only 50 different species of bee in the UK

TRUE

FALSE

8. Butterflies taste things through their feet

TRUE

FALSE



# MARVELLOUS MINIBEASTS

In the box below, create your own marvellous minibeast! How many legs will it have, can it fly? Or draw your favourite minibeast!

Now that you've watched the video, can you use the words in the box to fill in the gaps below describing why minibeasts and insects are so important?

Minibeasts are really important members of our planet's \_\_\_\_\_. Minibeasts like earthworms help keep our \_\_\_\_\_ healthy and full of nutrients.

We would lose lots of our food crops if insects weren't around to carry out \_\_\_\_\_, where they move \_\_\_\_\_ from one plant to another. Lots of animals like \_\_\_\_\_ and small mammals would also struggle as insects make up most of their diet and are key in most \_\_\_\_\_. We can help minibeasts and insects by planting pollinator-friendly \_\_\_\_\_ and providing safe \_\_\_\_\_ like log and rock piles in our gardens and playgrounds. We'd be lost without these marvellous minibeasts!

POLLEN	FOOD CHAINS	SOILS
FLOWERS	ECOSYSTEMS	HABITATS
POLLINATION	BIRDS	



# BUG HUNT BONANZA

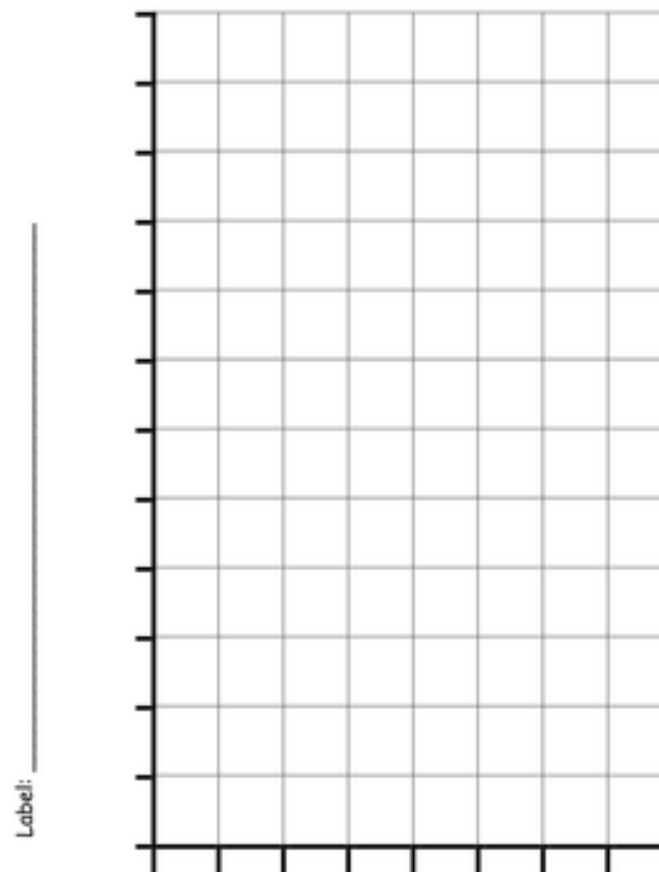
**Mission:** Take a walk and explore your school grounds, garden or local park to see what bugs you can find! Search under leaves, rocks and soil to see what species you spot and how many. Like a true scientist, see if you can identify what you find and record your findings in the table below!

Type of Bug	Number

Back inside, talk about what you found. Did you find lots of one species? Was there a species you thought would be there that wasn't? Where did you find the most bugs - why do you think this was?

Using the results from your table, make a graph using the grid opposite to show the different types and numbers of bugs, then label and colour them in.

A bar graph to show \_\_\_\_\_

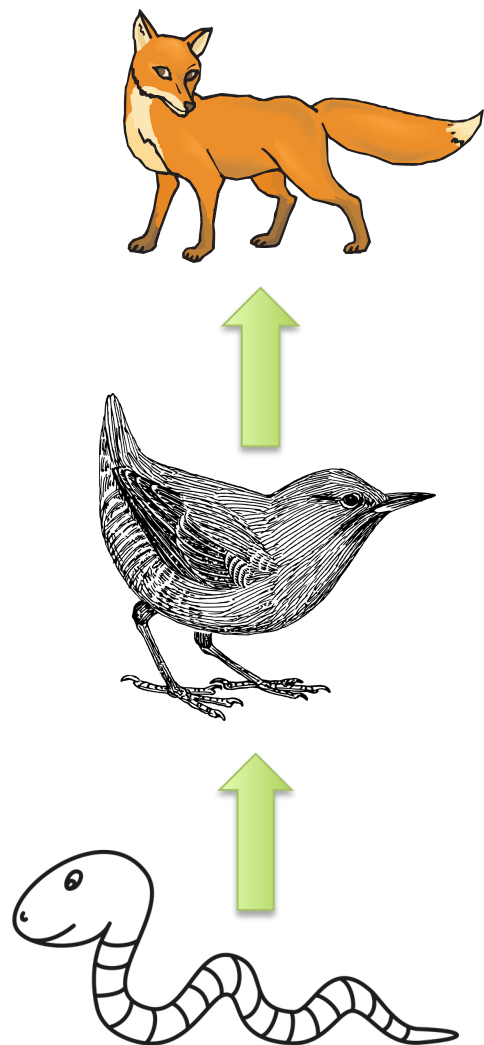


Label: \_\_\_\_\_



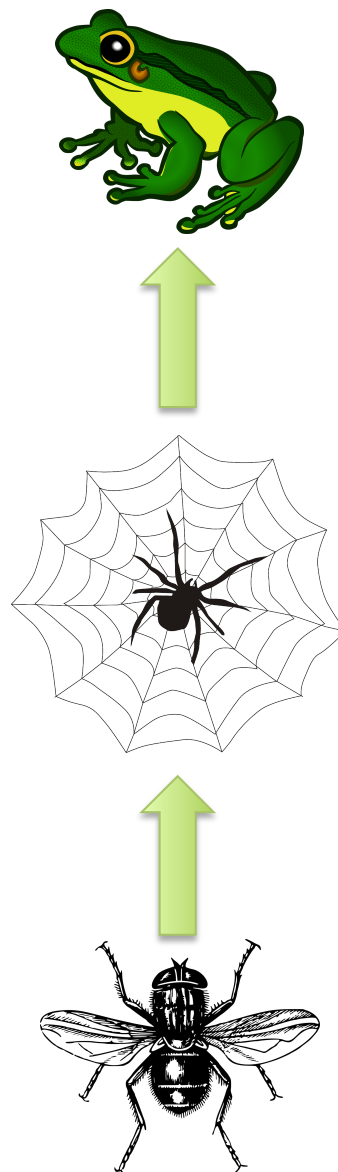
# FUNKY FOOD CHAINS

Create your own food chain in the space below by drawing and labelling different insects and other animals between the arrows.



OMNIVORES/  
CARNIVORES

HERBIVORES/  
DECOMPOSERS



OMNIVORES/  
CARNIVORES

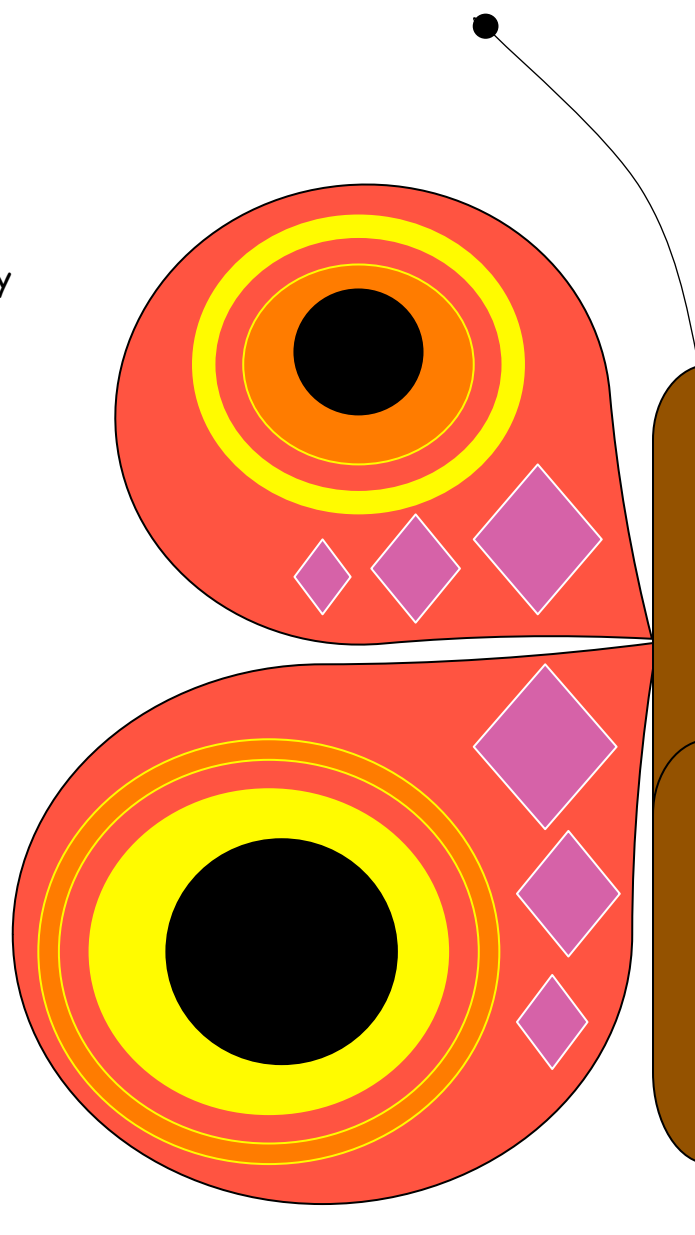
HERBIVORES/  
DECOMPOSERS





## MIRRORED MINIBEASTS

Can you draw and colour the other half of the butterfly to match this side? Butterflies are very important pollinators and lots are covered in lovely colourful designs. Complete this one or design your own!



TRUE OR FALSE ANSWERS:

1. True – they have 7 pairs
2. True – that's why you find them in damp places under rocks
3. False – different species of ladybird have different numbers of spots
4. False – they are classed as Arachnids as they have 8 legs, insects have 6
5. True – they are carnivores and have been known to eat other centipedes
6. False – they eat mainly dead plant matter
7. False – there are around 270 species of bee in the UK
8. True – they have taste sensors on their feet so can tell if their caterpillars can eat a plant by standing on the leaf

Thanks to The Ernest  
Cook Trust for funding  
this project!



**BUG HUNT ID GUIDE:** <https://www.imperial.ac.uk/media/imperial-college/research-centres-and-groups/opal/Invertebrates-guide--UPDATED-FINAL.pdf>

We would love to hear any feedback regarding the use of this pack and accompanying video!

*Contact:* [laura.shiels@belfasthills.org](mailto:laura.shiels@belfasthills.org)

You can also tag us on social media:

Twitter: @BelfastHills  
Facebook: Belfast Hills Partnership  
Instagram: @belfasthills