



# GET INVOLVED

## VOLUNTEER

Get involved in a host of volunteering activities including tree planting, litter picks and invasive species control amongst other tasks.



## KEEP UP TO DATE

News and events are posted on our website where you can also sign up to receive our e-newsletter.

## DONATE

Your support is crucial, please donate what you can Donate - Belfast Hills [belfasthills.org/get-involved/donate](http://belfasthills.org/get-involved/donate)



## PUBLIC TRANSPORT



### CAVE HILL COUNTRY PARK

Belfast Castle & Zoo - Metro: Any number 1 bus from Donegall Place, alight at Belfast Castle, walk 0.3 miles along Innisfayle Park.  
Upper Cavehill Road - Metro: 12A Carr's Glen bus from Donegall Place, alight at Shandarragh Park, walk 0.4 miles along Upper Cavehill Road to pedestrian entrance.  
Upper Hightown Road - Metro: 11A/11G Silverstream from Chichester Street, alight at Silverstream terminus, before walking 0.3 miles along Crumlin Road.

### LIGONIEL MILL DAMS:

Metro: 12C Ligoniel bus from Donegall Square North, alight at Thornberry Hill and continue to Thornberry Mews. 11E Ligoniel bus from Chichester Street, alight at Lever Street & walk 0.3 miles along Mill Avenue.

### CARNMONEY HILL

Metro: 14 Newtownabbey bus from Donegall Place, alight at Kings Road, walk 0.2 miles through Ardmany Drive and along Knockenagh Avenue. 2H Rathmullan Drive from Donegall Place, alight at Lacken Walk walk 300 feet to Knockenagh Avenue.

### DIVIS & BLACK MOUNTAIN

Ulsterbus: 106 Crumlin from Queen Street, alight Upper Springfield Road at hairpin bend stop. Backtrack about 1km citybound along the road. You will see this junction: and the National Trust brown sign nearby. Walk 800m up Divis Road.

### COLIN GLEN FOREST PARK

Glider: G1 Glider from College Square East, alight at Glengoland.

### GLAS-NA-BRADAN WOOD

Metro: Take 1A, 1D, 1E, 1F or 2A to Glengormley Centre and walk 1 mile along Hightown Road.



## FOLLOW & LIKE US

On Facebook, Instagram, LinkedIn, BlueSky and YouTube



Visit us at [www.belfasthills.org](http://www.belfasthills.org)  
Email us at [info@belfasthills.org](mailto:info@belfasthills.org)  
Contact us on 028 9060 3466

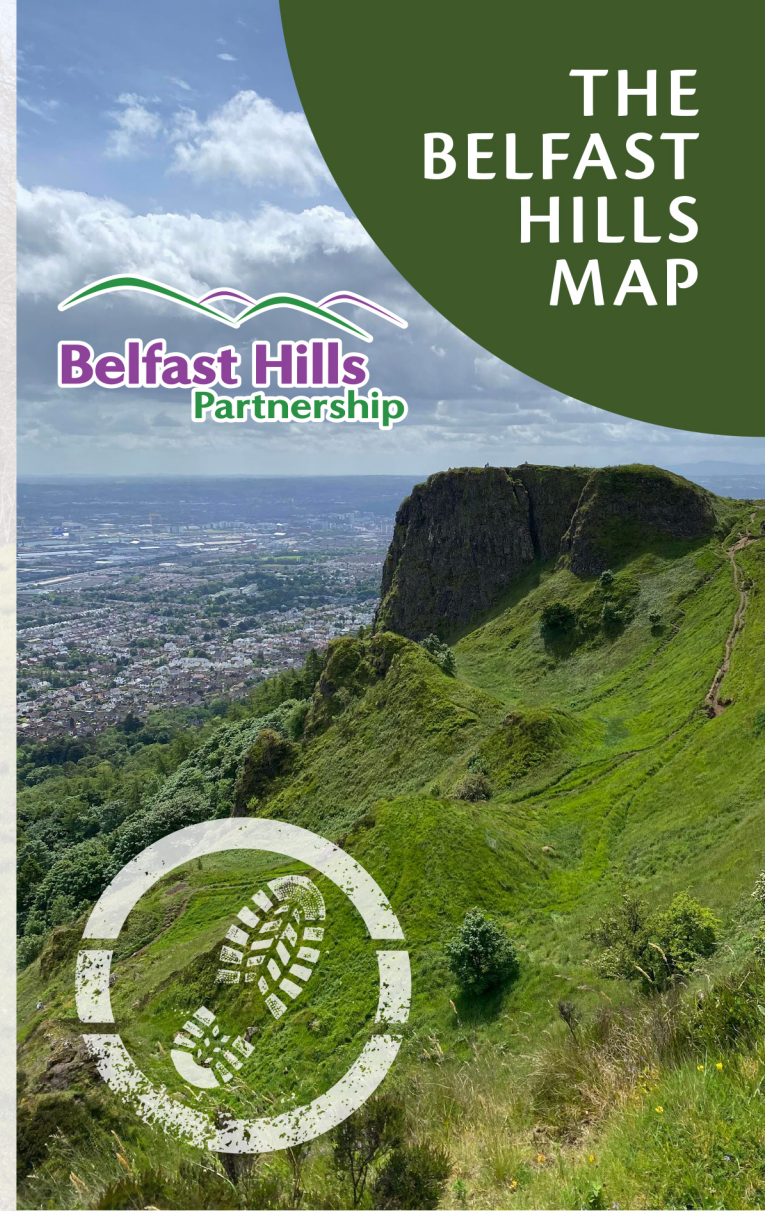
Belfast Hills Partnership  
9 Social Economy Village  
Hannahstown Hill  
Belfast BT17 0XS



Tel: 028 9060 3466  
[www.belfasthills.org](http://www.belfasthills.org)

\* The full name of the organisation is the Belfast Hills Partnership Trust Ltd

# THE BELFAST HILLS MAP



# EXPERIENCE THE BELFAST HILLS



A mosaic of rolling hills, wooded river valleys and small fields make up the unique landscape of the Belfast Hills.

Featuring lovely trails with stunning views, forays into native flora and fauna and fascinating wildlife, habitat and biodiversity, there's lots to do and see when out and about in the Belfast Hills.

Enjoy gorgeous wildflower fields, look out for rabbits, foxes and badgers. Spot birds like meadow pipits and skylarks. You might even see Irish hare, red grouse or curlew, which are priority species earmarked in need of conserving.

The landscape of the Belfast Hills provides great examples of how the people who lived, farmed, hunted and died many centuries ago have left their marks on the landscape. The hills are dotted with signs of how we used to live, when Belfast was little more than marsh and swamp.



# WALKING CODE

THE PARTNERSHIP ACTIVELY PROMOTES RESPONSIBLE COUNTRYSIDE ENJOYMENT TO ENSURE THAT THE HILLS REMAIN A SAFE, WELCOMING AND BEAUTIFUL SPACE FOR ALL TO ENJOY

# ABOUT US



1.

## PLAN AHEAD

Know where to walk, what to wear and how to minimise waste

2.

## BE SAFE

Pay attention to signs, weather conditions and traffic levels

3.

## UNDERSTAND ACCESS

Know where you are allowed to go and leave gates as you find them

4.

## MINIMISE IMPACT

Take litter home, extinguish matches and cigarettes carefully, don't pollute water

5.

## CONTROL DOGS

Please keep dogs on a lead especially near farm animals

6.

## RESPECT THE COUNTRYSIDE

Don't disturb or feed wildlife

7.

## CONSIDER OTHERS

Don't interfere with livestock, crops or machinery. Minimise noise

**Belfast Hills Partnership are an independent charity which seeks to improve how the Belfast Hills are managed. Since 2005, we have been caring for...**

### the Belfast Hills

- Uniting a wide range of stakeholders to future proof the Hills against negative human impacts
- Protection and promotion of the heritage of the Hills

### their wildlife

- Habitats including woodlands, grasslands, uplands
- Wildlife and priority species
- Green space connectivity (nature recovery networks)

### and people

- Health and wellbeing (regenerative recreation)
- Community involvement and support throughout all life stages
- Strengthening local education and employability



Company Number NI053189  
Charity Reference No. XR70288

# PUBLIC SITES IN THE BELFAST HILLS



**PUBLIC TRANSPORT**  
SEE OVERLEAF  
(back panel)



**CAVE HILL**  
COUNTRY PARK

A diverse mix of woodland, basalt cliffs, upland heath and the iconic caves

**BY CAR.** Belfast Castle (BT15 5GR) and Belfast Zoo (BT36 7PN) car parks. From Westlink exit Clifton Street, turning left. Take third exit at roundabout and follow signs along Antrim Road for Belfast Castle or Belfast Zoo. Upper Hightown Road (BT14 8RR) car park. From Clifton Street take second exit at roundabout onto Crumlin Road. Continue about 4 miles around Horseshoe Bend then right onto Upper Hightown Road. Car park is on right. Free car parking at all locations.

Owned and managed by Belfast City Council



**CARMONEY HILL**

A woodland walk that provides various views over Belfast & Newtownabbey

**BY CAR.** (BT36 6BE) From M2, continue to M5. Follow sign for Carrickfergus, then left (signed Glengormley) onto Station Road. At mini roundabout exit straight onto O'Neill Road (B531) and take first right after traffic lights onto Knockenagh Avenue. Free parking at Rathfern social activity centre and children's play park.

Owned by Newtownabbey Borough Council, Managed by The Woodland Trust

**GLAS-NA-BRADAN**  
WOOD

A mix of newly planted woodland, upland heath & species rich grassland

**BY CAR.** (BT36 7AU) From M2 take exit 4 onto Sandyknowes roundabout. Take the 1st exit, then turn left onto Mallusk Rd, then right onto the Hightown Rd. You can access Glas-na-Bradán Wood through the same entrance to St Enda's GAC.

Owned and managed by The Woodland Trust



**LIGONIEL**  
DAMS

Historic mill dams with dragonflies, bats and other amazing wildlife

**BY CAR.** (BT14 8EG) Westlink Clifton Street exit turn left. At roundabout take second exit onto Crumlin Road. After 2 miles turn left onto Ligoniel Road then left at Mill Avenue. Continue to Wolfhill Avenue South, onto Thornberry Road. Please consider residents when parking in this area.

Owned by and managed by Ligoniel Improvement Association



**DIVIS & THE BLACK MOUNTAIN**

This area of grassland, bog and heath provides stunning views from highest point in Belfast

**BY CAR.** (BT17 0NG) Leave M1 at Junction 2. Take the A55 (outer ring) signed Falls. Go straight across the first two roundabouts. From dual carriageway, turn left onto Upper Springfield Road. Continue for 2.5 miles. Shortly after national speed limit sign, turn right onto Divis Road (signposted). Entrance is half a mile along on the right hand side. Free parking available.

Owned and managed by The National Trust



**COLIN GLEN**  
FOREST PARK

A walk along Colin River through a beautiful wooded glen

**BY CAR.** (BT17 0HW) Leave M1 at Junction 3, right onto Blacks Road to T-junction and turn left. Colin Glen is on the right. Free car parking.

Lower Colin Glen owned & managed by Colin Glen Trust  
Upper Colin Glen owned & managed by The National Trust



**SLIEVENACLOY**  
NATURE RESERVE

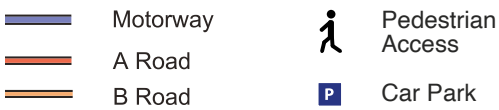
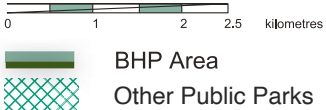
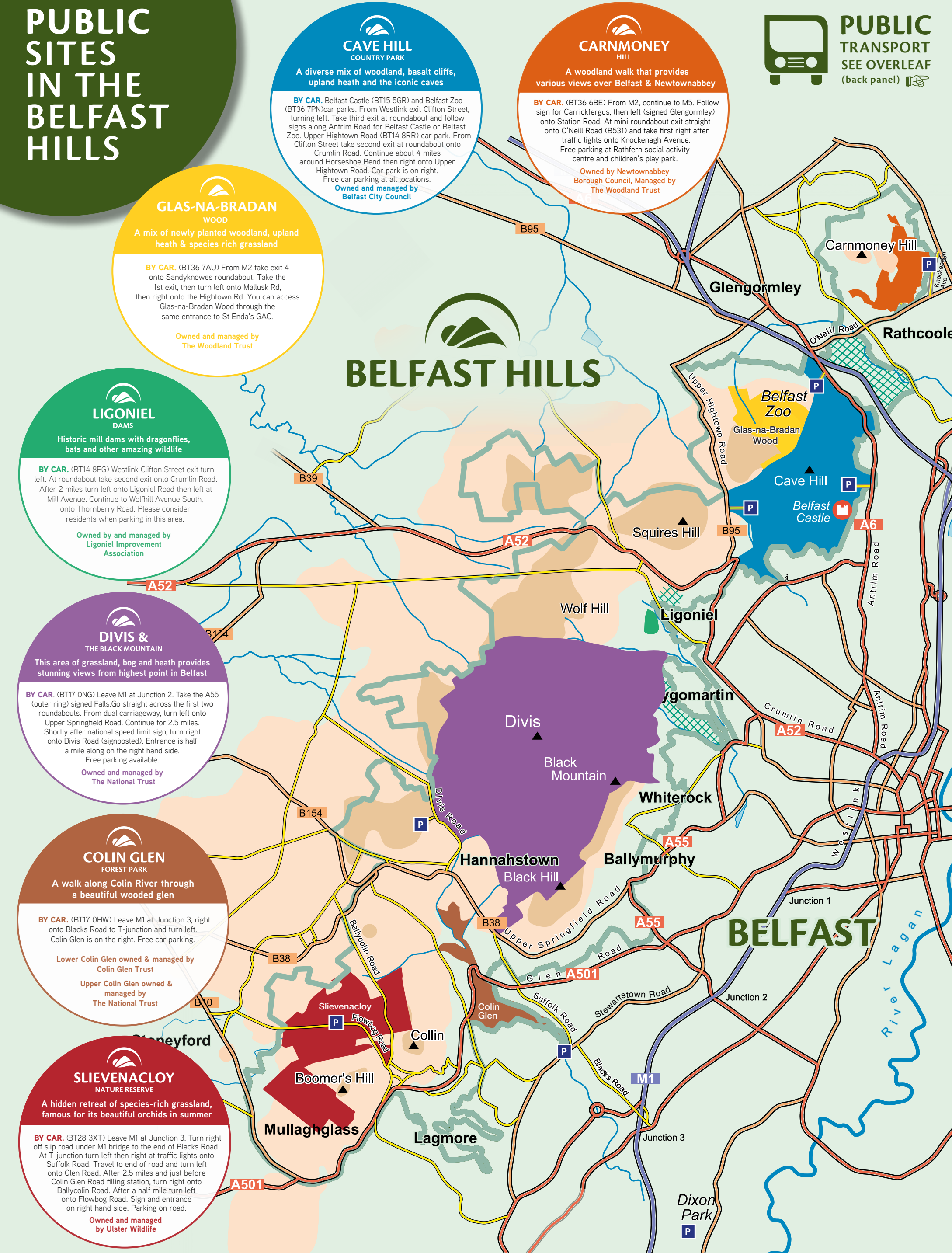
A hidden retreat of species-rich grassland, famous for its beautiful orchids in summer

**BY CAR.** (BT28 3XT) Leave M1 at Junction 3. Turn right off slip road under M1 bridge to the end of Blacks Road. At T-junction turn left then right at traffic lights onto Suffolk Road. Travel to end of road and turn left onto Glen Road. After 2.5 miles and just before Colin Glen Road filling station, turn right onto Ballycolin Road. After a half mile turn left onto Flowbog Road. Sign and entrance on right hand side. Parking on road.

Owned and managed by Ulster Wildlife

## BELFAST HILLS

## BELFAST



The publishers of this map cannot be held responsible or liable for any loss or damage occasioned to any person acting or refraining from action as a result of any use or reliance on the material in this map, nor any errors, omissions or any changes in the material. This does not affect your statutory rights.



Permit No. 80257. This material is based upon Crown Copyright and is reproduced with the permission of Land & Property Services under delegated authority from the Controller of Her Majesty's Stationery Office, © Crown Copyright and database rights 2009.